



MOTION MCW WITH M&A COMPUTER INSTALLATION AND ASSEMBLY PROCEDURE

Document Number:

002-15-0012

Revision History

Name	Date	ECN # - General Statement of Change	Version
A Love	2009-10-09	ECN-2422 INITIAL RELEASE	A00

PROPRIETARY NOTE

THIS DOCUMENT CONTAINS INFORMATION CONFIDENTIAL AND PROPRIETARY TO MOTION COMPUTING AND SHALL NOT BE REPRODUCED OR TRANSFERRED TO OTHER DOCUMENTS OR DISCLOSED TO OTHERS OR USED FOR ANY PURPOSE OTHER THAN THAT FOR WHICH IT WAS OBTAINED WITHOUT THE EXPRESSED WRITTEN CONSENT OF MOTION COMPUTING.

Table of Contents

REVISION HISTORY	I
TABLE OF CONTENTS	II
1. BASE WITH POWER SUPPLY SHROUD INSTALLED.....	4
2. REMOVE THE PLASTIC SHROUD THAT COVERS THE POWER SUPPLY.....	4
3. COLUMN ASSEMBLY.....	4
3.1 LAY BASE ON ITS BACK	5
3.2 POSITION COLUMN ABOVE BASE.....	5
3.3 INSERT BOLTS THROUGH THE BOTTOM OF THE CART INTO THE COLUMN. THREAD EACH BOLT BEFORE FULLY TIGHTENING ANY BOLT. TIGHTEN ALL FOUR BOLTS.....	5
3.4 SET CART UPRIGHT.....	6
3.5 REMOVE ONE SCREW AND LOOSEN THE OTHER SCREW OF THE COLUMN TOP PLATE.....	6
3.6 INSERT DECORATIVE COVER IN THE BACK OF THE COLUMN CHANNEL GROVES.	6
3.7 SLIDE DECORATIVE COVER DOWN TO WITHIN 24 INCHES OF THE BASE.....	7
3.8 ROUTE CABLES BEHIND THE DECORATIVE COVER	7
3.9 SLIDE DECORATIVE COVER TO THE BOTTOM OF THE COLUMN	7
3.10 HOLDING CABLE IN THE CHANNEL AND INSERT SECOND DECORATIVE COVER IN THE BACK COLUMN CHANNEL GROVES	8
3.11 SLIDE THE DECORATIVE COVER DOWN SO IT TOUCHES THE FIRST COVER.....	8
4. INSTALLING THE WORK SURFACE AND DRAWER.....	8
4.1 REMOVE THE DRAWERS BY PRESSING THE PLASTIC RELEASE TABS ON THE INSIDE OF THE DRAWER GLIDE RAILS.....	9
4.2 NOTE WHERE THE ALLEN SET SCREWS ARE LOCATED	9
4.3 SLIDE THE WORK SURFACE DRAWER ASSEMBLY MOUNTING BRACKET INTO THE ADJUSTABLE RAIL LOCATED ON THE FRONT COLUMN	9
4.4 SLIDE THE WORK SURFACE DRAWER ASSEMBLY DOWN THE RAIL TO ABOUT 2 INCHES (4.4 CM) FROM THE BOTTOM OF THE RAIL.	10
4.5 TIGHTEN THE SET SCREWS.....	10
4.6 FULLY TIGHTEN THE SET SCREWS.....	10
4.7 REINSTALL THE DRAWER BY SLIDING IT ONTO THE DRAWER RAILS.....	11
5. ASSEMBLE THE CPU AND MONITOR VESA MOUNT ASSEMBLY	11
5.1 ATTACH METAL SPACERS TO THE FRONT CPU VESA MOUNT PLATE CORNERS.....	12
5.2 PLACE NYLON SPACERS OVER THE MONITOR VESA MOUNT PLATE THREADED INSERTS WHERE ARROWS INDICATE.....	12
5.3 INSERT SCREWS THROUGH THE FRONT CPU VESA MOUNT PLATE HOLE AND THROUGH THE NYLON SPACERS, THREADING THEM INTO THE MONITOR VESA MOUNT PLATE THREADED INSERTS	12
5.4 ATTACH THE FLUSH TILTING VESA MOUNT BRACKET TO THE BACK CPU VESA MOUNT PLATE	13
5.5 TURN OVER THE BACK CPU VESA MOUNT PLATE AND ATTACH THE M&A COMPUTER BRACKET	13
5.6 BEND THE M&A COMPUTER BRACKET CABLE GUIDE, JUST ENOUGH TO CLEAR SPACE FOR THE CPU MOUNT METAL SPACER.....	13
5.7 ATTACH THE BACK CPU VESA MOUNT PLATE TO THE FRONT CPU VESA MOUNT PLATE, USING THE THREADED METAL SPACERS ATTACHED TO THE FRONT PLATE.....	14
5.8 INSTALL THE MONITOR/CPU MOUNT ASSEMBLY BY SLIDING THE FLUSH TILTING VESA MOUNT BRACKET INTO THE FRONT OF THE COLUMN RAIL	14
5.9 SLIDE THE MONITOR/CPU MOUNT ASSEMBLY ALL THE WAY DOWN UNTIL THE MONITOR RESTS ON THE WORK SURFACE	14

- 6. INSTALL THE M&A COMPUTER.....15**
- 7. INSTALL THE ANTENNA/WEBCAM MOUNTING BRACKET, AND FULLY TIGHTEN THE SET SCREWS.....15**
- 8. POSITION THE MONITOR/CPU ASSEMBLY BY RAISING IT UNTIL IT IS JUST BELOW THE ANTENNA/WEBCAM MOUNTING BRACKET, AND FULLY TIGHTEN THE SET SCREWS.....15**
 - 8.1 DRESS WEBCAM CABLE USING CABLE TIES AND CONNECT WEBCAM TO CPU 16
- 9. ASSEMBLE THE BATTERY GAUGE HOUSING16**
- 10. ASSEMBLE THE MOUNTING PLATE AND BATTERY GAUGE17**
 - 10.1 PLACE THE MOUNTING PLATE WITH THE BACK SIDE FACING UP, AND SET THE BATTERY GAUGE PLATE OVER THE FIXED MOUNT SCREWS.17
 - 10.2 ATTACH THE BATTERY GAUGE HOUSING TO THE MOUNTING PLATE.17
 - 10.3 TURN OVER THE MOUNTING PLATE ASSEMBLY, REMOVE THE ADHESIVE COVER PAPER FROM THE BACK OF THE BATTERY GAUGE, AND ADHERE THE BATTERY GAUGE TO THE MOUNTING PLATE ASSEMBLY..... 18
- 11. PLUG THE RJ45 BATTERY GAUGE CABLE INTO THE JACK, THROUGH THE HOLE IN THE BACK OF THE BATTERY GAUGE HOUSING.....18**
- 12. PLUG IN THE ANTENNA AND POWER SUPPLY CABLES, FEEDING THEM THROUGH THE CABLE ACCESS HOLE IN THE BATTERY GAUGE MOUNT PLATE.....19**
 - 12.1 DRESS AND SECURE THE POWER SUPPLY CABLES, INCLUDING THE BATTERY GAUGE CABLE, USING CORRUGATED CABLE WRAP AND CABLE TIES 19
- 13. ATTACH THE BATTERY GAUGE MOUNT PLATE TO THE BACK CPU VESA MOUNT PLATE20**
- 14. PLUG IN THE COMPUTER AND MONITOR CABLES20**
 - 14.1 SECURE THE POWER, COMPUTER, AND MONITOR CABLES USING CABLE TIES AND THE BUILT IN CABLE GUIDES21
- 15. PULL THE EXCESS CABLE LENGTH TO THE BOTTOM OF THE COLUMN.....21**
 - 15.1 DRESS THE CABLES AT THE BOTTOM OF THE COLUMN USING CORRUGATED CABLE WRAP, SECURING WITH CABLE TIES, AND PULLING THE EXCESS CABLE LENGTH INTO THE SHEET METAL BASE.22
- 16. INSTALL BATTERIES WITH TERMINAL POINTING OUT. IF THE BATTERIES ARE TURNED IN, THE THERMAL SENSORS WILL READ INCORRECTLY.22**
 - 16.1 THE UNPAINTED SIDE OF THE THERMAL SENSOR MUST BE IN CONTACT WITH THE BATTERY POST.....23
 - 16.2 MAKE SURE BATTERY CONNECTIONS ARE TIGHT ON BOTH BATTERIES23
- 17. REINSTALL THE SHROUD AND COLUMN TOP PLATE23**

1. Base with power supply shroud installed

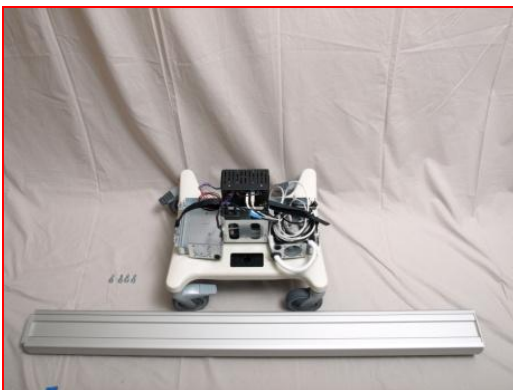


2. Remove the plastic Shroud that covers the power supply



Tip: Setting the wheel locks will help hold the Base assembly in place.

3. Column assembly



3.1 Lay base on its back



3.2 Position column above base



3.3 Insert bolts through the bottom of the cart into the column. Thread each bolt before fully tightening any bolt. Tighten all four bolts.



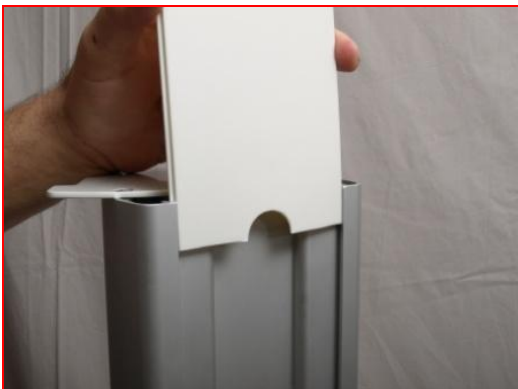
3.4 Set cart upright



3.5 Remove one screw and loosen the other screw of the column top plate



3.6 Insert decorative cover in the back of the column channel groves.



Note: Notice the half moon on the first decorative cover

3.7 Slide decorative cover down to within 24 inches of the base



3.8 Route cables behind the decorative cover



3.9 Slide decorative cover to the bottom of the column



3.10 Holding cable in the channel and insert second decorative cover in the back column channel grooves



Note: The half moon cut out is up

3.11 Slide the decorative cover down so it touches the first cover



4. Installing the work surface and drawer



Note: The work surface and drawer come pre-assembled.

4.1 Remove the drawers by pressing the plastic release tabs on the inside of the drawer glide rails.



4.2 Note where the Allen set screws are located



4.3 Slide the work surface drawer assembly mounting bracket into the adjustable rail located on the front column



- 4.4 Slide the work surface drawer assembly down the rail to about 2 inches (4.4 cm) from the bottom of the rail.**



- 4.5 Tighten the set screws**



- 4.6 Fully tighten the set screws**



Note: Failure to fully tighten the set screws may result in the assembly dropping

4.7 Reinstall the drawer by sliding it onto the drawer rails



5. Assemble the CPU and Monitor VESA Mount assembly



5.1 Attach metal spacers to the front CPU VESA Mount plate corners



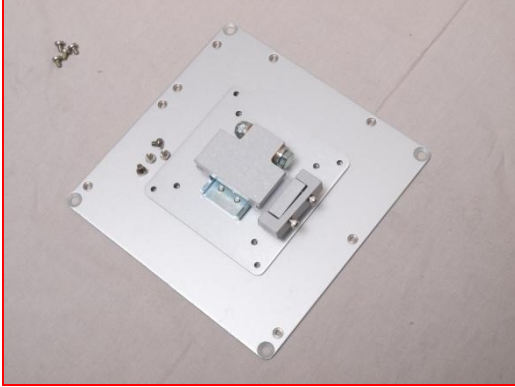
5.2 Place nylon spacers over the Monitor VESA Mount plate threaded inserts where arrows indicate



5.3 Insert screws through the front CPU VESA Mount plate hole and through the nylon spacers, threading them into the Monitor VESA Mount plate threaded inserts



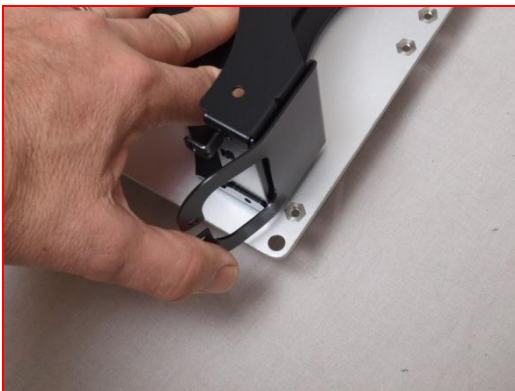
5.4 Attach the Flush Tilting VESA Mount bracket to the back CPU VESA Mount plate



5.5 Turn over the back CPU VESA Mount plate and attach the M&A Computer bracket



5.6 Bend the M&A Computer bracket cable guide, just enough to clear space for the CPU Mount metal spacer



5.7 Attach the back CPU VESA Mount plate to the front CPU VESA Mount plate, using the threaded metal spacers attached to the front plate



5.8 Install the Monitor/CPU Mount assembly by sliding the Flush Tilting VESA Mount bracket into the front of the column rail



5.9 Slide the Monitor/CPU Mount assembly all the way down until the monitor rests on the work surface



6. Install the M&A Computer



7. Install the Antenna/Webcam Mounting bracket, and fully tighten the set screws



8. Position the Monitor/CPU assembly by raising it until it is just below the Antenna/Webcam Mounting bracket, and fully tighten the set screws



8.1 Dress Webcam cable using cable ties and connect Webcam to CPU



9. Assemble the Battery Gauge housing



Note position of housing square cutout (offset to left) and cover hole (offset to bottom)

10. Assemble the Mounting plate and Battery Gauge



10.1 Place the Mounting plate with the back side facing up, and set the Battery Gauge plate over the fixed mount screws.



10.2 Attach the Battery Gauge housing to the Mounting plate.



- 10.3 Turn over the Mounting plate assembly, remove the adhesive cover paper from the back of the Battery Gauge, and adhere the Battery Gauge to the Mounting Plate assembly.**



- 11. Plug the RJ45 Battery Gauge cable into the jack, through the hole in the back of the Battery Gauge housing.**



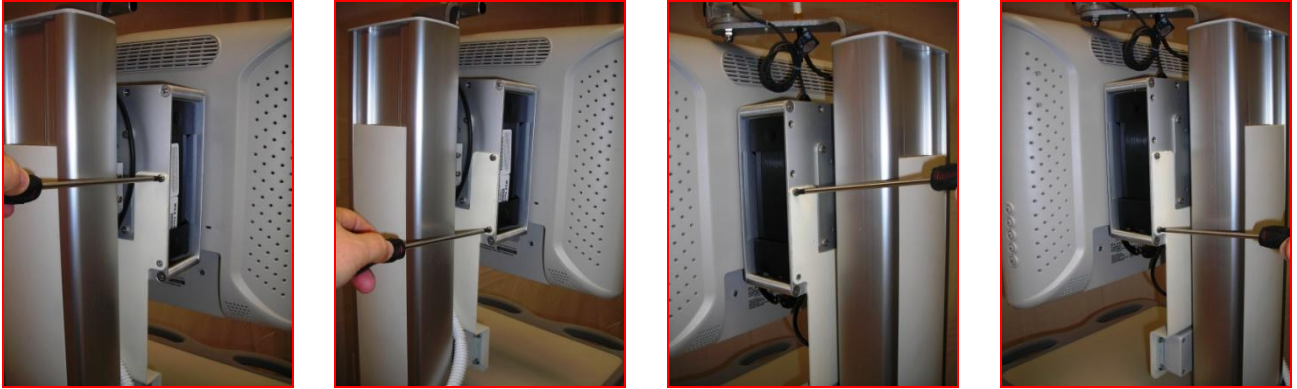
12. Plug in the antenna and power supply cables, feeding them through the cable access hole in the Battery Gauge Mount plate



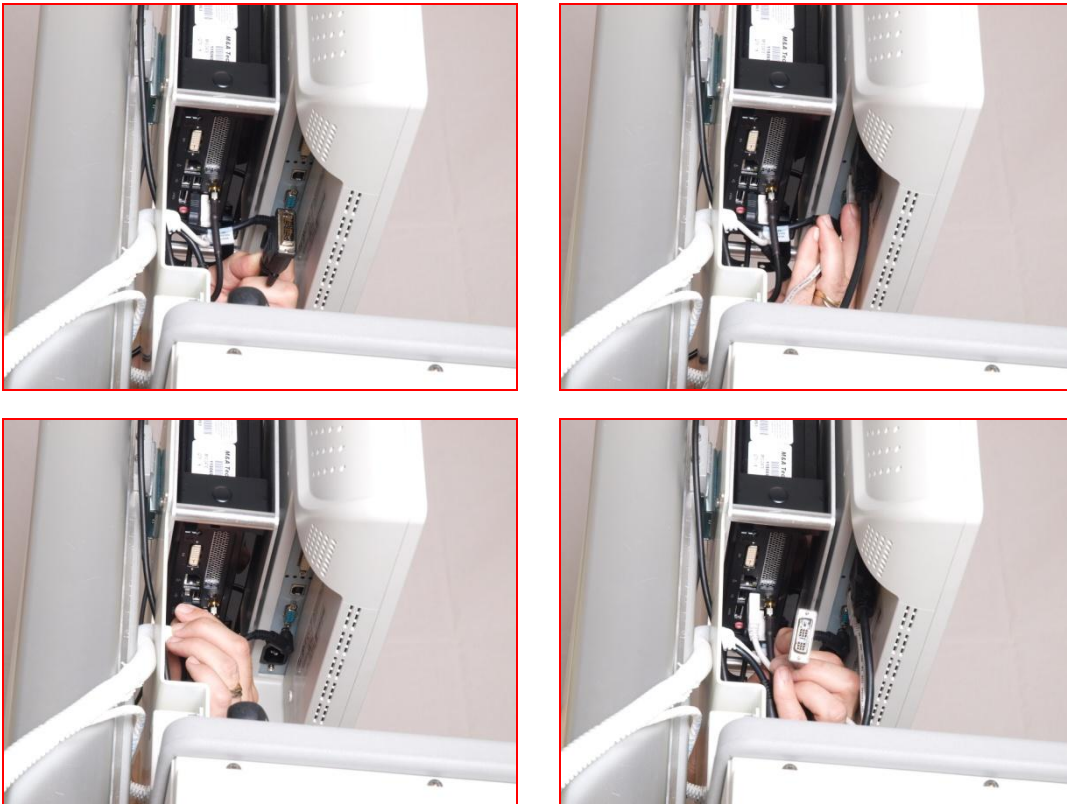
12.1 Dress and secure the power supply cables, including the Battery Gauge cable, using corrugated cable wrap and cable ties



13. Attach the Battery Gauge Mount plate to the back CPU VESA Mount plate



14. Plug in the computer and monitor cables



14.1 Secure the power, computer, and monitor cables using cable ties and the built in cable guides



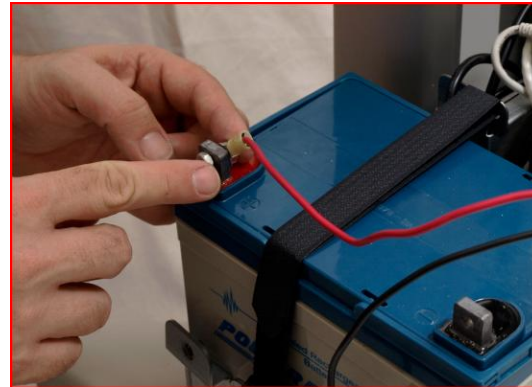
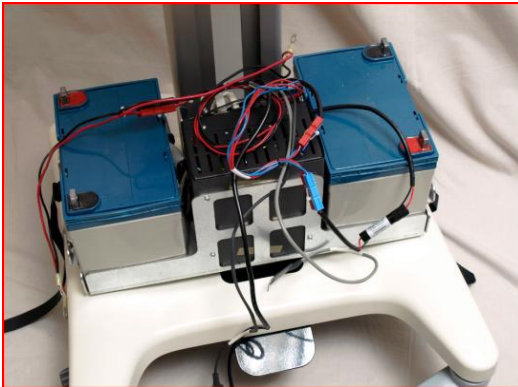
15. Pull the excess cable length to the bottom of the column



- 15.1 Dress the cables at the bottom of the column using corrugated cable wrap, securing with cable ties, and pulling the excess cable length into the sheet metal base.**



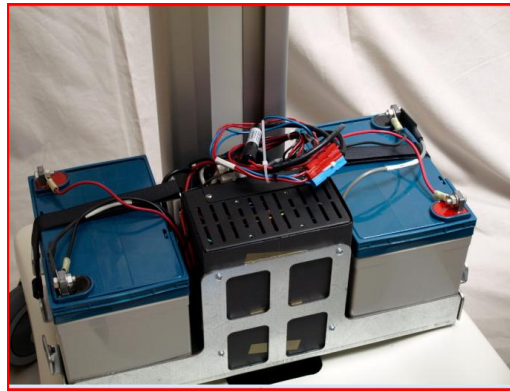
- 16. Install Batteries with terminal pointing out. If the batteries are turned in, the thermal sensors will read incorrectly.**



16.1 The unpainted side of the thermal sensor must be in contact with the battery post.



16.2 Make sure battery connections are tight on both batteries



17. Reinstall the shroud and column top plate

