



MOTION MCW BATTERY INSTALLATION AND MOBILE POWER SYSTEM SETUP

Document Number:

002-15-0014

Revision History

| Name | Date | ECN # - General Statement of Change | Version |
|--------|------------|-------------------------------------|---------|
| A Love | 2009-10-16 | ECN-2429 INITIAL RELEASE | A00 |

PROPRIETARY NOTE

This document contains information confidential and proprietary to Motion Computing and shall not be reproduced or transferred to other documents or disclosed to others or used for any purpose other than that for which it was obtained without the expressed written consent of Motion Computing.

Table of Contents

1. Installing the Battery / Batteries _____ **1**

1.1 Remove housing security screws from both sides. (total of 4 Torx bolts) _____ 1

1.2 Remove the plastic shroud that covers the power supply _____ 1

1.3 Undo battery straps and remove contents from tray. _____ 2

1.4 Place batteries in the tray, one on either side. Install Batteries with terminal pointing out. _____ 2

1.5 Reattach battery straps on both sides _____ 2

1.6 Identify the RED and BLACK battery leads on the Power system. _____ 3

1.7 Begin with Battery 1 (on the left) and attach the Black Battery lead and the Bat 1 Thermal sensor to the Black (negative) post on the battery. _____ 3

1.8 Place a piece of tape (clear tape is used in the photo below) on the RED lead for Battery 2 to prevent any accidental discharges. _____ 4

1.9 Attach the RED lead to Battery 1 (on the left). _____ 4

1.10 Attach the Black Battery lead and the Bat 2 Thermal sensor to the Black (negative) post on Battery 2. Make sure that the silver side of the sensor is facing the battery post. _____ 4

1.11 Attach the RED lead to Battery 2 (on the right). _____ 5

1.12 Make sure that the cables that exit the housing and go up the column are not pinched _____ 5

1.13 Dress the excess power cables with cable ties _____ 5

1.14 Replace the power system shroud and replace the four Torx bolts to secure it to the base _____ 6

2. Mobile Power System Set-Up _____ **6**

2.1 First, invoke the MPS Software, by clicking on the icon _____ in the Quick-Start bar: _____ 7

2.2 Select “Display Nurses Screen” _____ 7

2.3 Select “Advanced”. _____ 7

2.4 Enter “MPS” as the password to access the advanced setup screen _____ 7

2.5 Click on “Setup” from the top Menu bar, and then click on “Series 301 Setup” _____ 7

2.6 Enter the setup information, and then select Set and Send _____ 8

2.7 After the “Set & Send” input, the Mobile Power System will recalculate the time based on the new battery configuration and the current power draw (this may take several minutes). _____ 8

1. Installing the Battery / Batteries

(Images shown without Column assembly for view ability)

The Unit should not be plugged into AC power until the battery installation has been completed. Caution should still be observed while connecting batteries as they will have a residual charge.

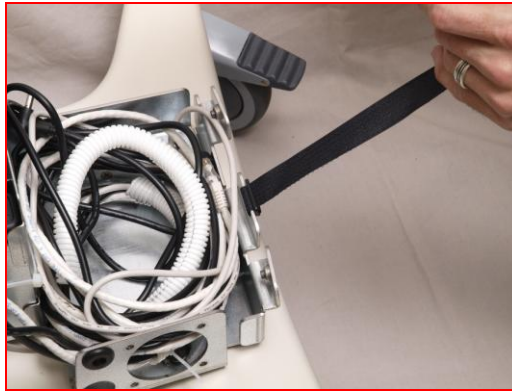
1.1 Remove housing security screws from both sides. (total of 4 Torx bolts)



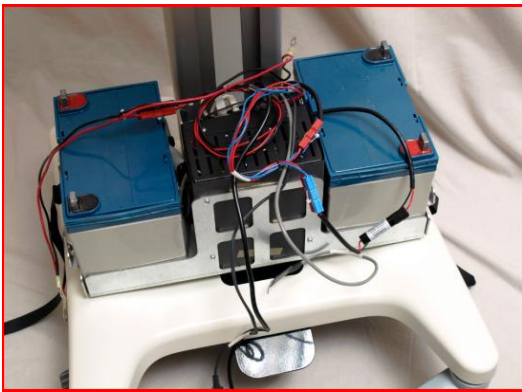
1.2 Remove the plastic shroud that covers the power supply



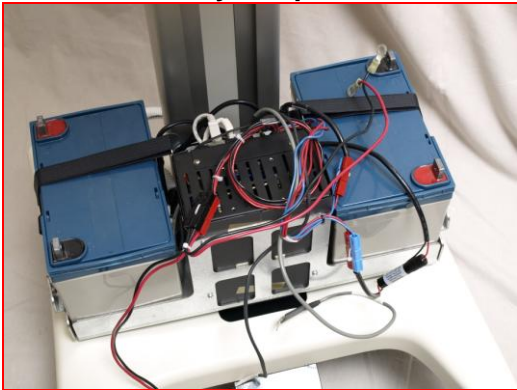
1.3 Undo battery straps and remove contents from tray.



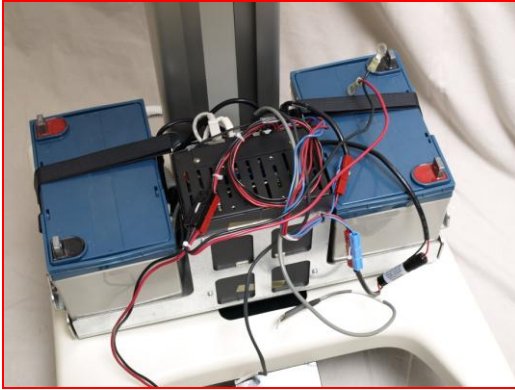
1.4 Place batteries in the tray, one on either side. Install Batteries with terminal pointing out. If the battery terminals are pointing in, the thermal sensors will read incorrectly. If only one battery is required place in the left bay.



1.5 Reattach battery straps on both sides



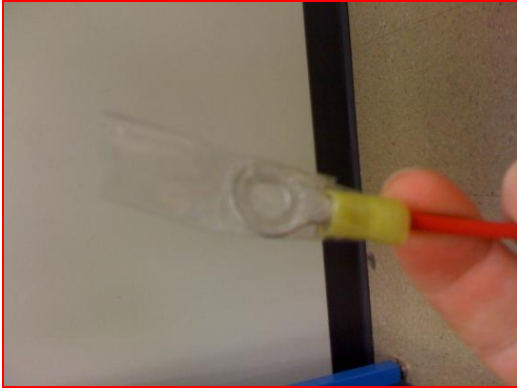
- 1.6 Identify the RED and BLACK battery leads on the Power system. Separate one set of leads for each battery. (One Red and one Black for each). Identify the Bat 1 and Bat 2 Thermal leads, one to each side. Bat 1 to the left and Bat 2 to the right side.**



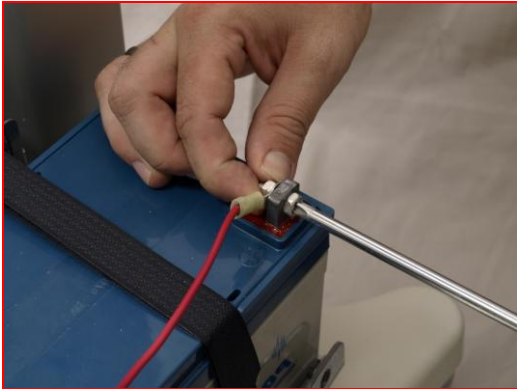
- 1.7 Begin with Battery 1 (on the left) and attach the Black Battery lead and the Bat 1 Thermal sensor to the Black (negative) post on the battery. The unpainted side of the thermal sensor must be in contact with the battery post**



- 1.8 Place a piece of tape (clear tape is used in the photo below) on the **RED** lead for Battery 2 to prevent any accidental discharges.



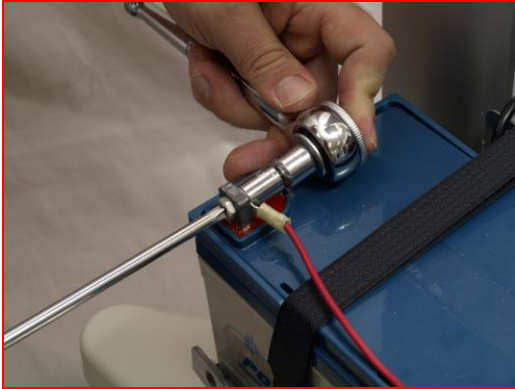
- 1.9 Attach the **RED** lead to Battery 1 (on the left).



- 1.10 Attach the Black Battery lead and the Bat 2 Thermal sensor to the Black (negative) post on Battery 2. Make sure that the silver side of the sensor is facing the battery post. The unpainted side of the thermal sensor must be in contact with the battery post



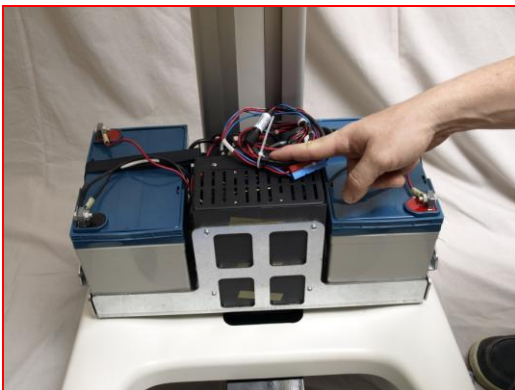
1.11 Attach the RED lead to Battery 2 (on the right).



1.12 Make sure that the cables that exit the housing and go up the column are not pinched



1.13 Dress the excess power cables with cable ties



1.14 Replace the power system shroud and replace the four Torx bolts to secure it to the base



2. Mobile Power System Set-Up

2.1 Install the Series-301 Mobile Power System Software by selecting Setup and following the prompts and accepting the recommended default settings.

Once the software has been installed, the power system must be configured to reflect the number and size of batteries, the installation date, and other details.

2.2 If the software was previously installed on the system, invoke the MPS Software by right clicking on the icon  in the Quick-Start bar:



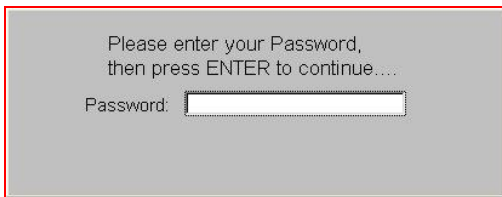
2.3 Select “Display Nurses Screen”



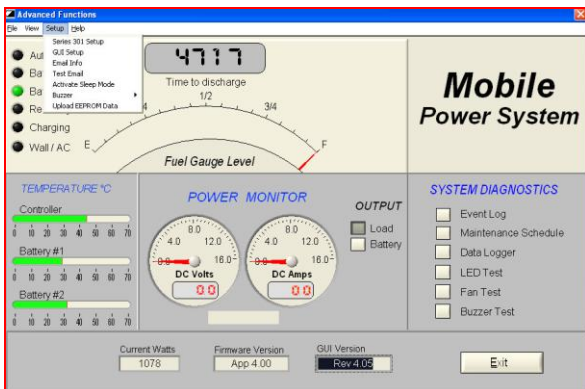
2.4 Select “Advanced”.



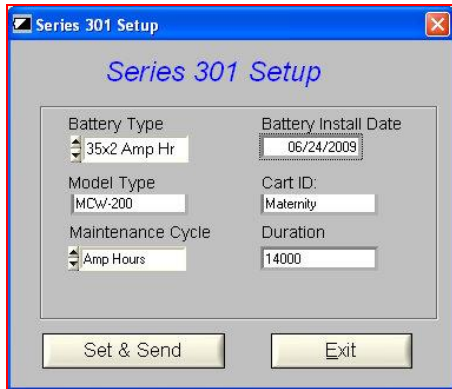
2.5 Enter “MPS” as the password to access the advanced setup screen



2.6 Click on “Setup” from the top Menu bar, and then click on “Series 301 Setup”

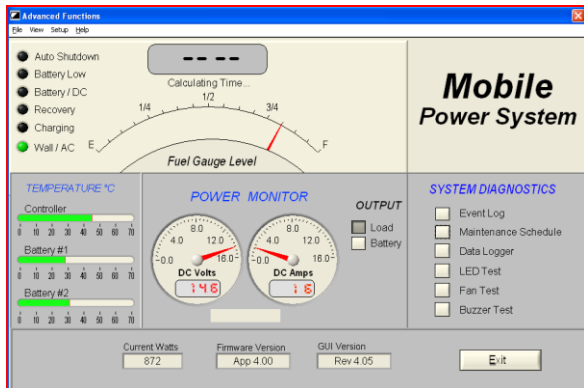


2.7 Enter the setup information, and then select Set and Send



Battery Type - 35 Amp Hr (Small Battery), 35x2 Amp Hr (Large Battery)
Battery Install Date - MM/DD/YYYY format
Model Type - MCW-200
Cart ID - PC name (as defined by the image installer)
Maintenance Cycle - Amp Hours
Duration – 7000 (Small Battery), 14000 (Large Battery)

2.8 After the “Set & Send” input, the Mobile Power System will recalculate the time based on the new battery configuration and the current power draw (this may take several minutes).



Note: The Gas Gauge will not activate until the cart is plugged into AC power for 1 minute, even if the Batteries are fully charged.